

A scenic landscape featuring a grassy field in the foreground, a line of high-voltage power transmission towers on the left, and a large, forested mountain in the background under a blue sky with white clouds. A semi-transparent green circle is overlaid on the right side of the image, containing the text.

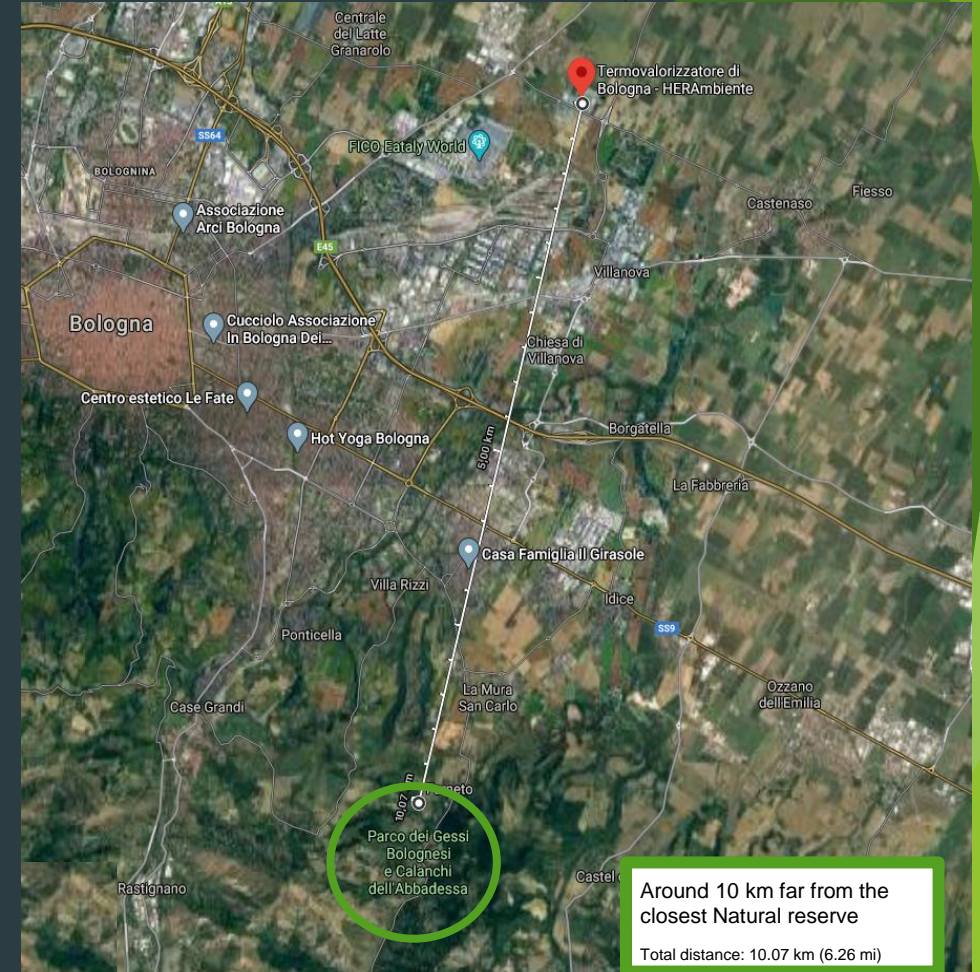
HERA GROUP Production sites

Hera asset platform

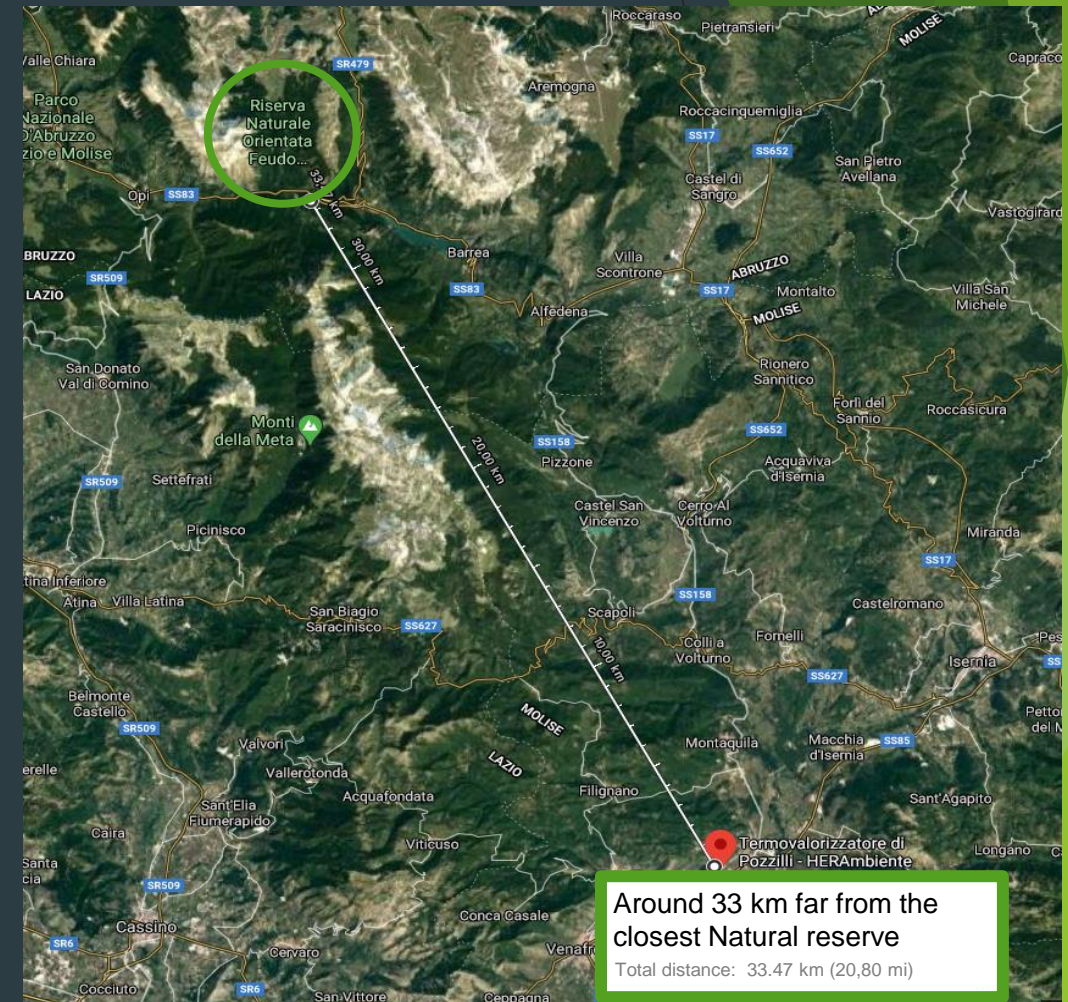
- ▶ Hera operates mainly assets devoted to the distribution of primary services such as gas, electricity and water distribution.
- ▶ The Group is strongly committed in the management of services respecting the environment (soil, water and air) and the Biodiversity, operating technologically advanced assets to properly treat third parties waste (hazardous and non hazardous), third parties waste water and to reduce their emissions related to their energy consumption (ESCO).
- ▶ The Group operates with a negligible capacity in power generation plant (Hera operates directly only a cogeneration plant in Imola with an installed capacity of 60Mw). Nevertheless, the Group operates 90* plants for third parties waste treatment, of which the WTE plants do also recover electricity through the exploitation of main process by-product (heat produced by burning process). Further more, these WTE plants are equipped with sophisticated technology to minimize environmental impacts and maintain a constant monitoring of their impacts, in order to execute proper remediation plans to obtain the lowest polluting impact and to guarantee a «Zero Net Loss» on Biodiversity.
- ▶ The waste treatment through WTE sites are mapped in the following, highlighting their distance from Biodiversity protected areas.

** This plant form include several other plant that cannot be considered power plants even though negligible electricity production is obtained to optimise the environmental sustainability of the plant.*

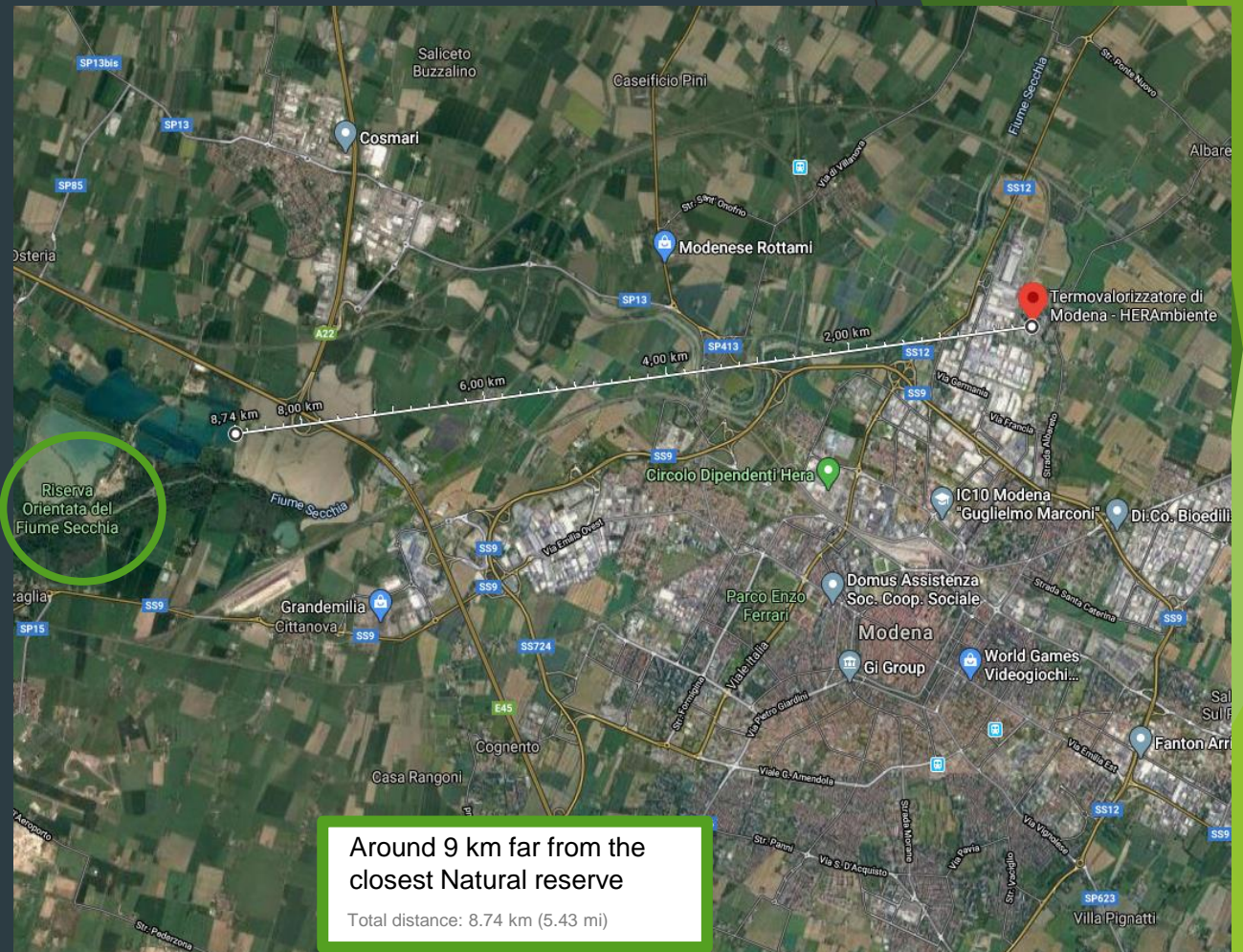
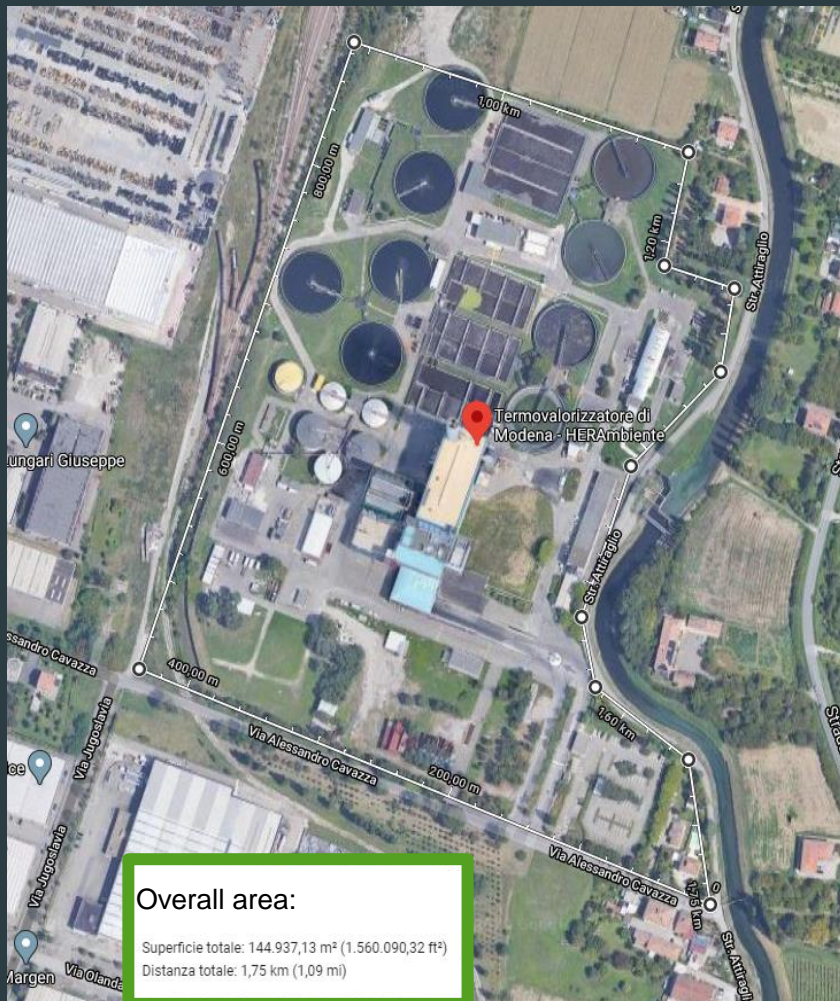
WTE BOLOGNA | Area: 10.7 ha



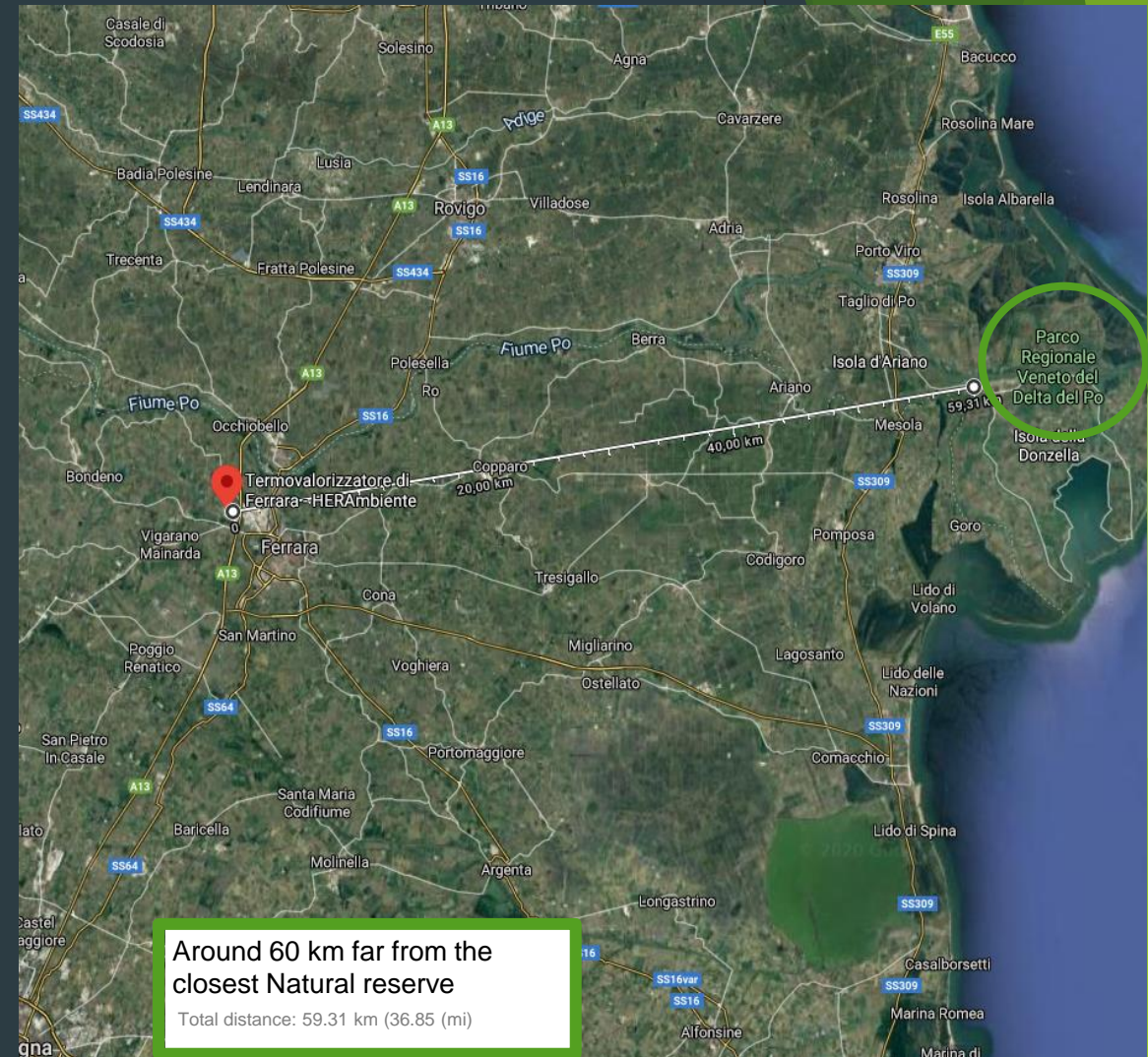
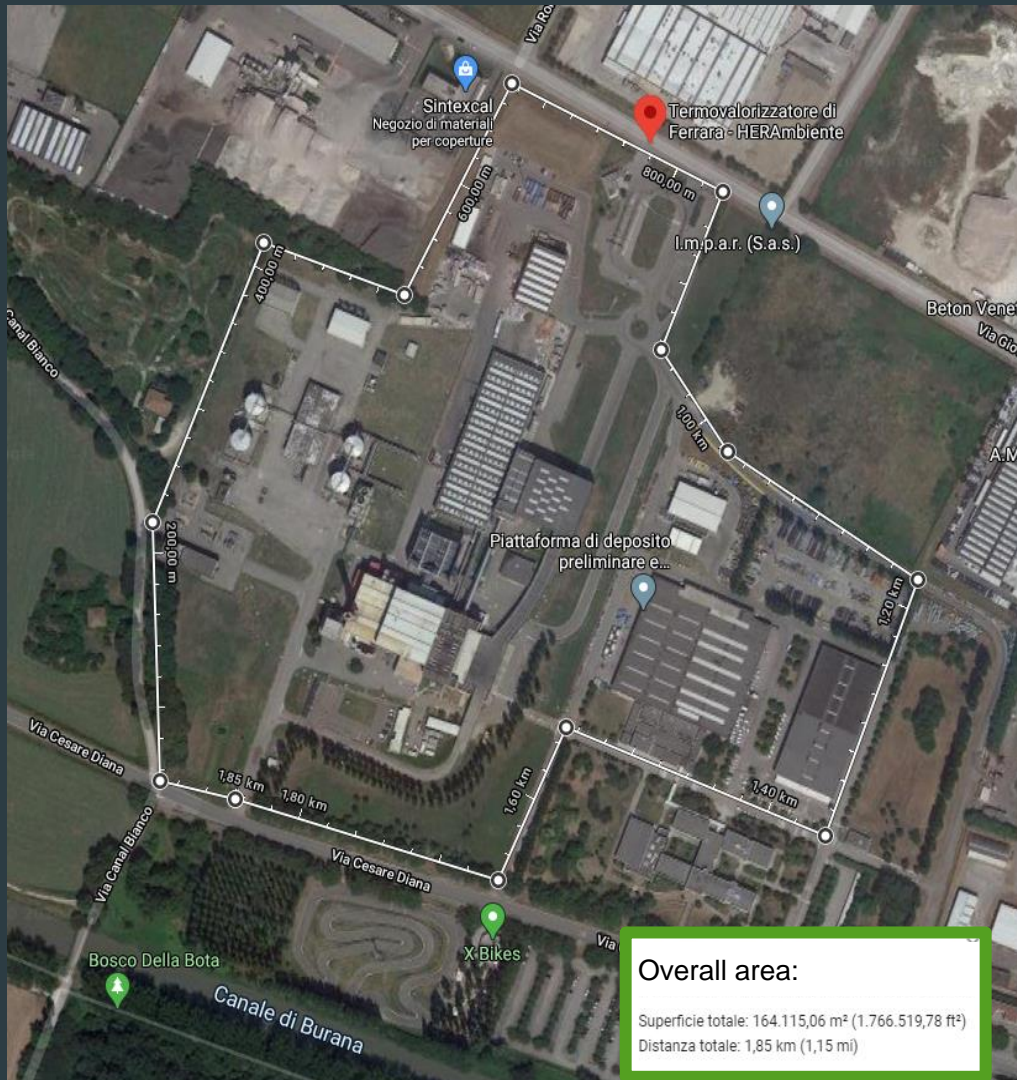
WTE POZZILLI | Area: 3.7 ha



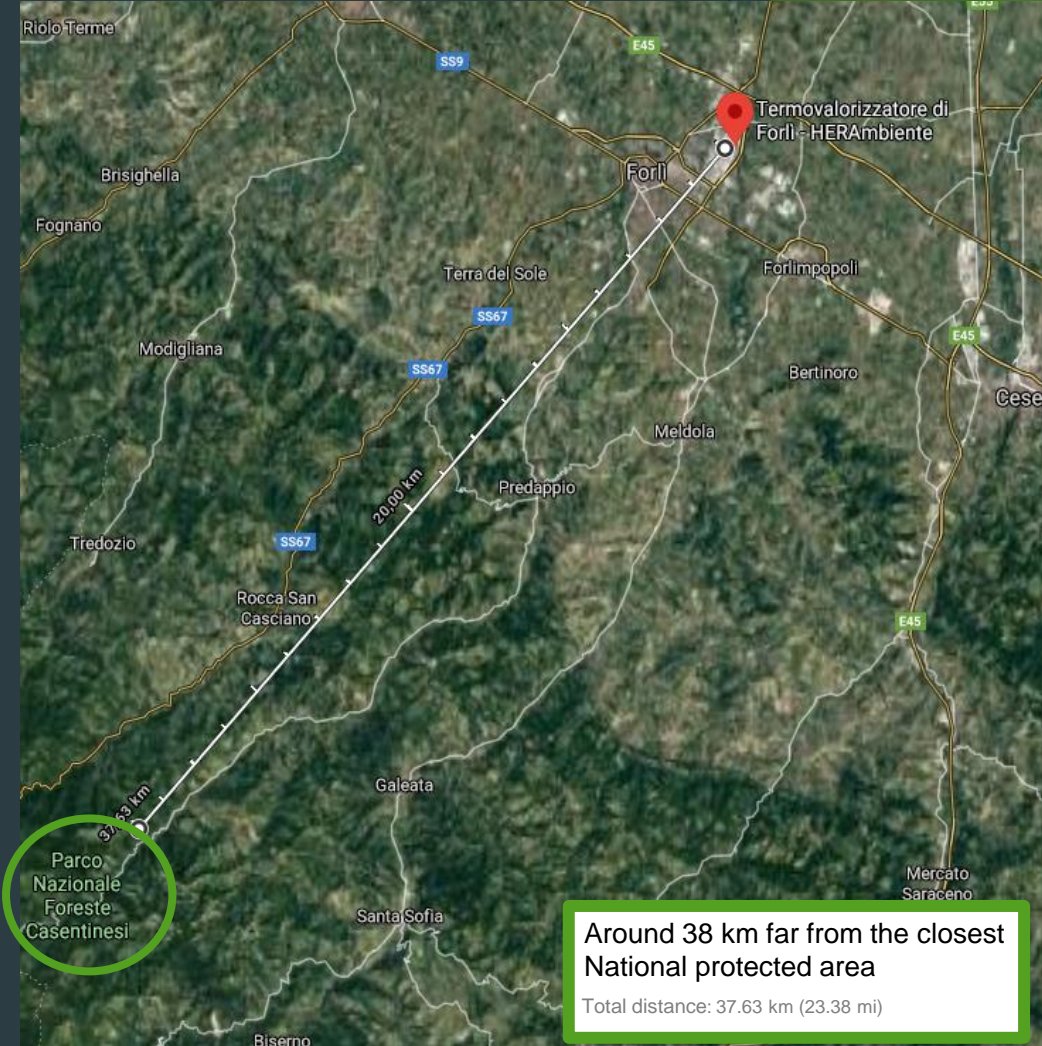
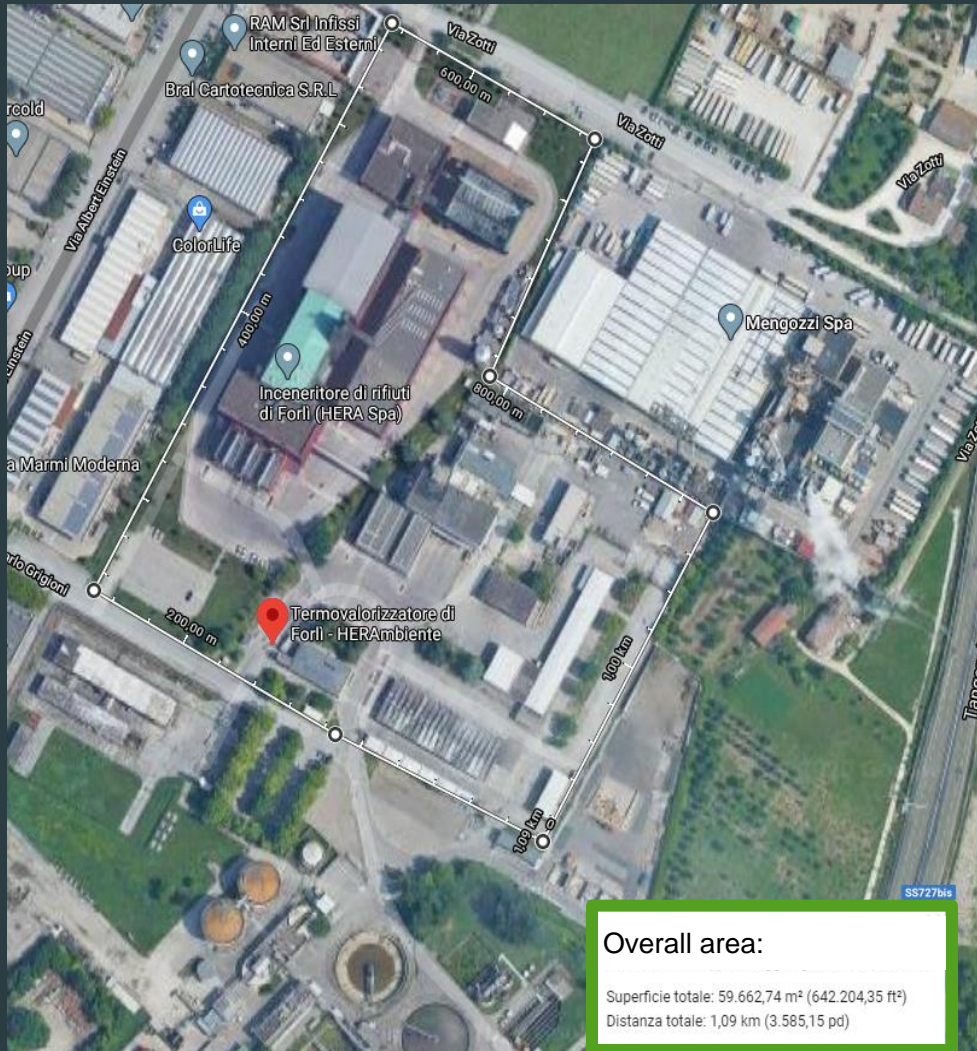
WTE MODENA | Area: 14.5 ha



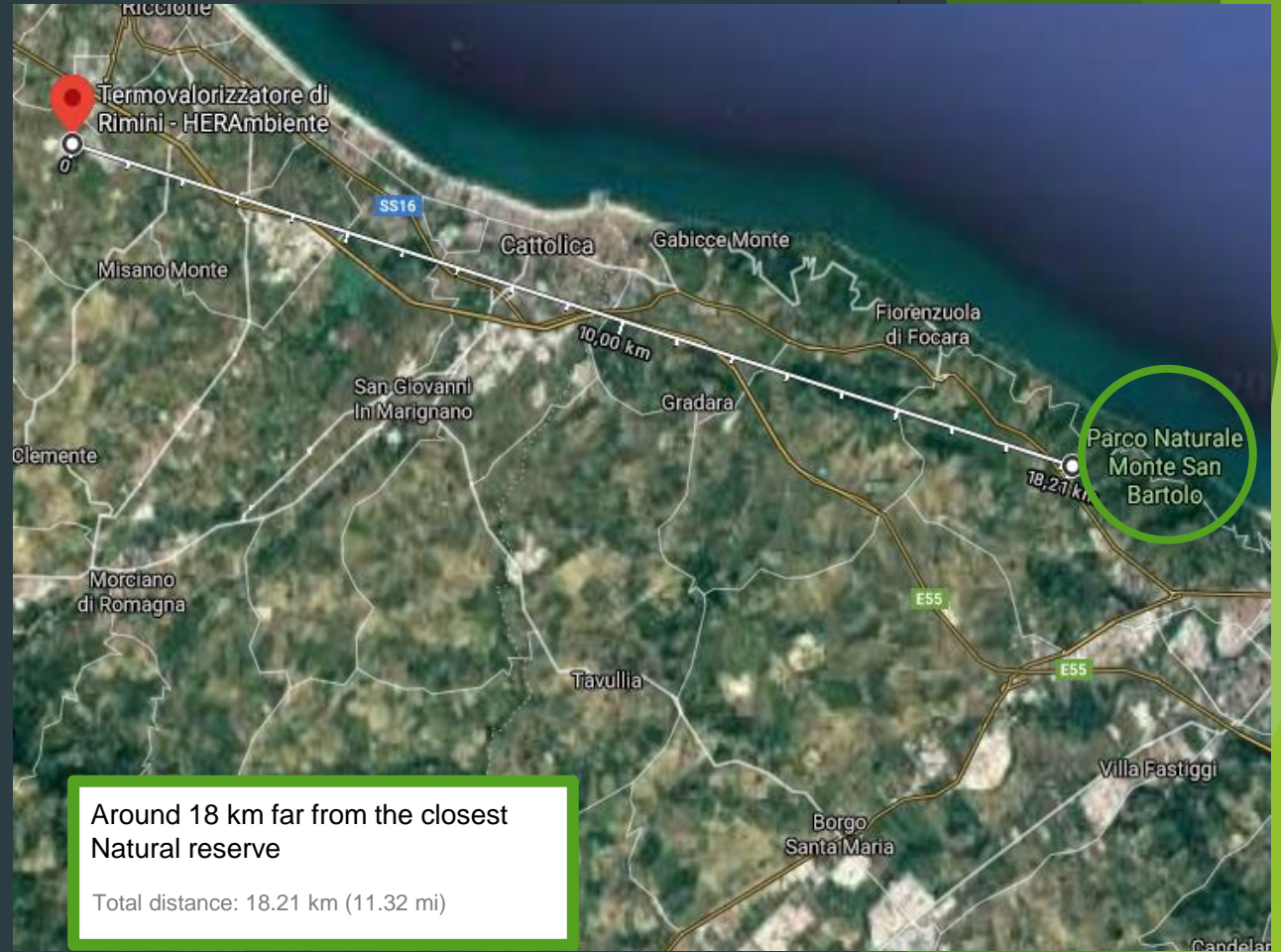
WTE FERRARA | Area: 16.4 ha



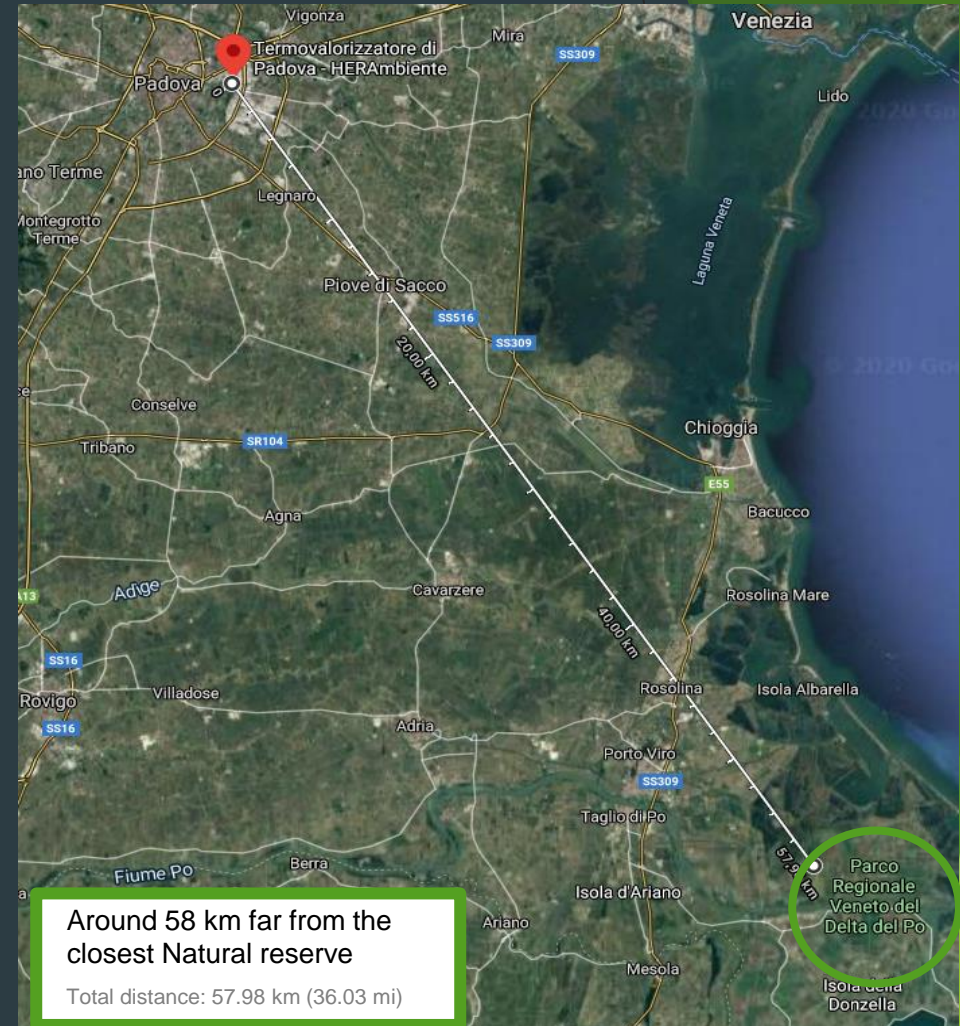
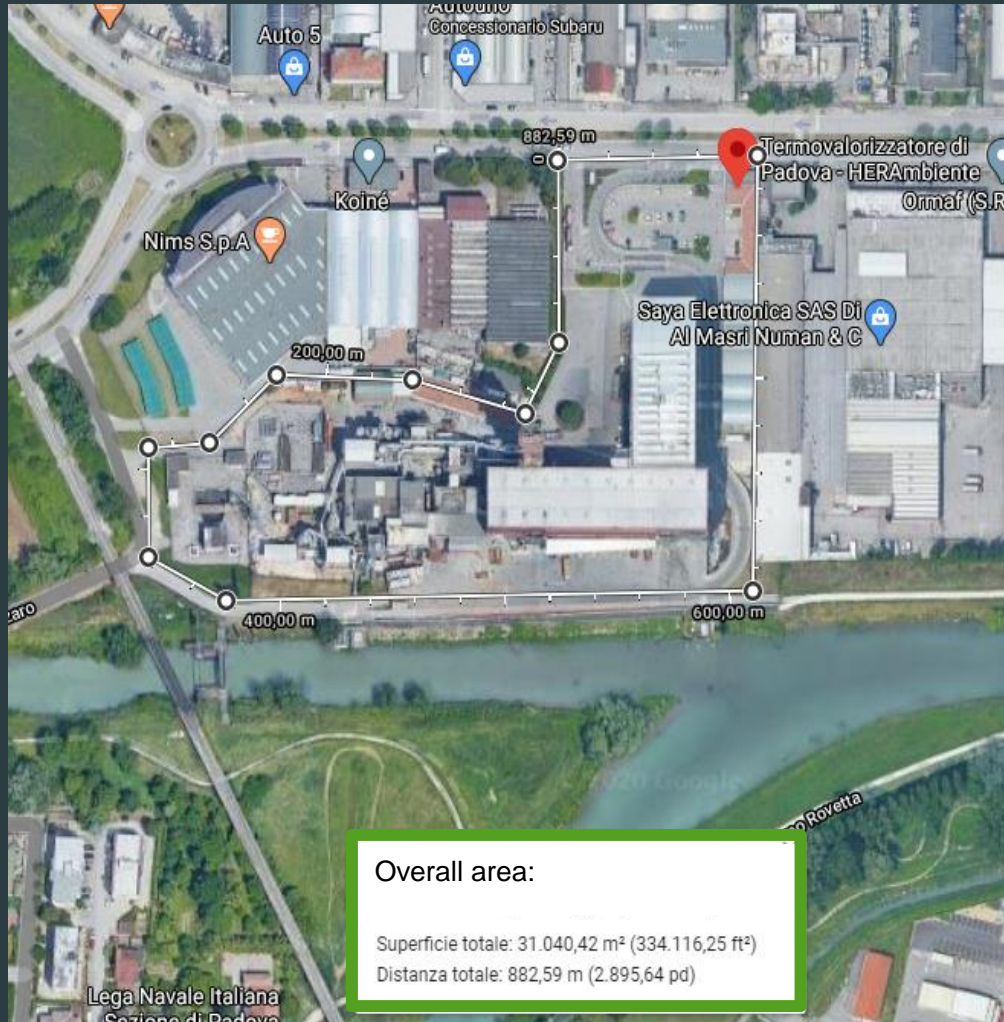
WTE FORLI' | Area: 6.0 ha



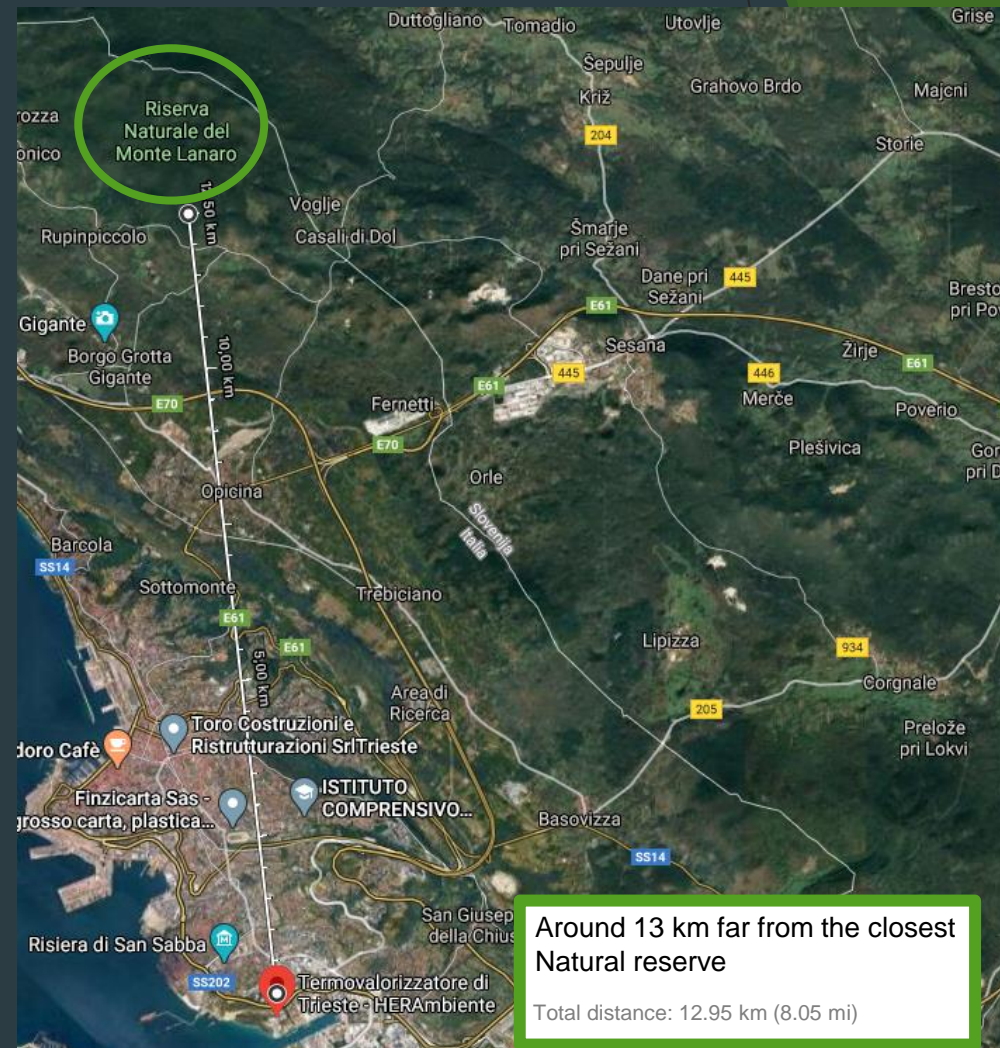
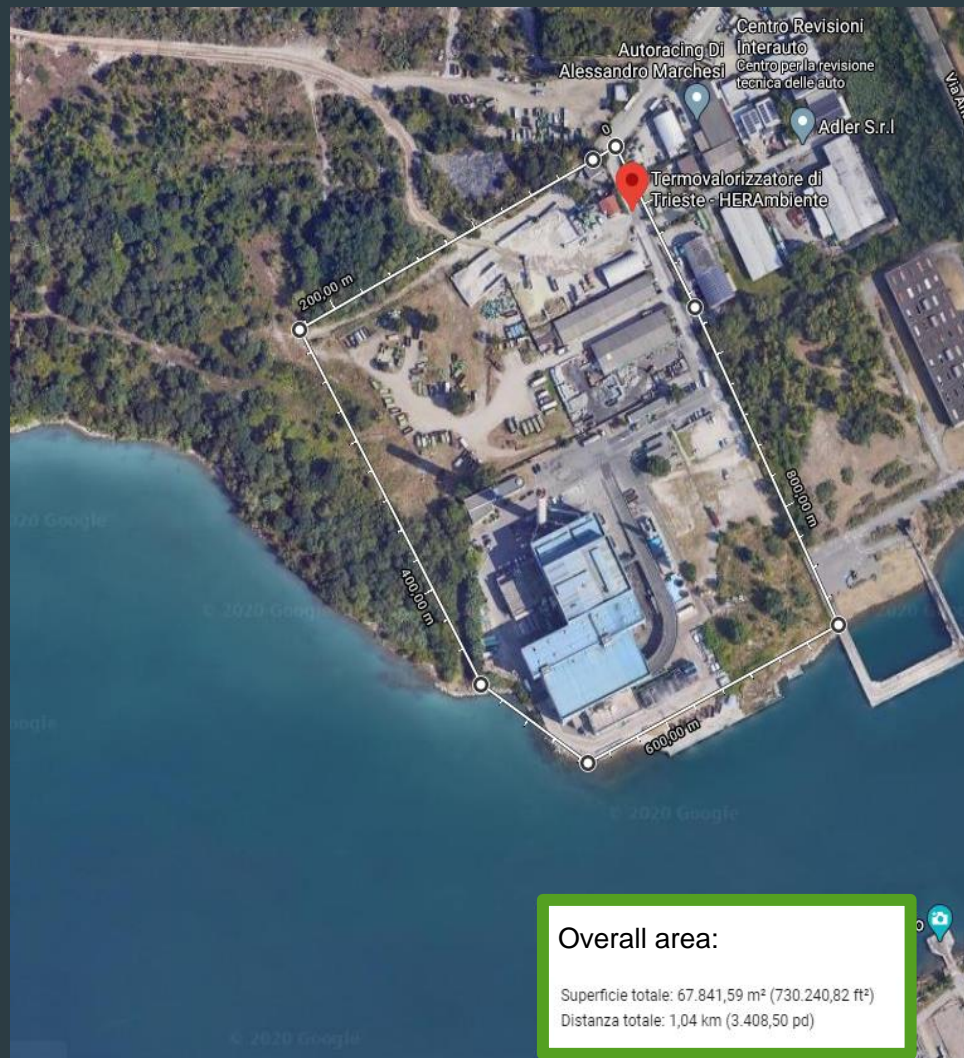
WTE RIMINI | Area: 7.5 ha



WTE PADOVA | Area: 3.1 ha



WTE TRIESTE | Area: 6.8 ha



COGEN IMOLA | Area: 4.2 ha

